

Histology, Immunohistochemistry & Electron Microscopy

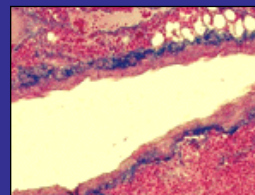
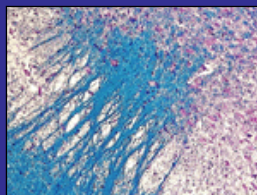
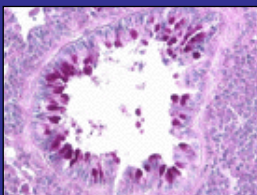
Your Outsourcing Partner for Contract Research & Manufacturing of Biologics

Histology Services

Two week typical turnaround. Starting Material would be provided by the investigator.

(Formalin Fixed, Frozen Tissue in OCT & Paraffin Blocks)

- **Embedding**
- **Sectioning**
- **Apoptosis (TUNEL)**
- **Hemotoxylin-Eosin (H&E)**
- **Special Stains**
 - *Amyloid, Ca, Fe, Trichromes, PAS, Luxol Fast Blue, Oil Red O, Silver, Enzyme, β gal, Congo Red, Marchi, Alcian Blue, Luna, Safranin O, Verhoeff van Gieson, Nissl Golgi, Fontana Masson, Alkaline Phosphatase & Bielschowsky*

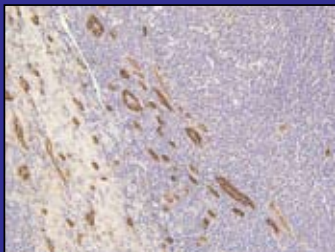


Immunohistochemistry

Starting Material would be provided by the investigator

(Formalin Fixed, Frozen Tissue in OCT, Paraffin Blocks & Slides)

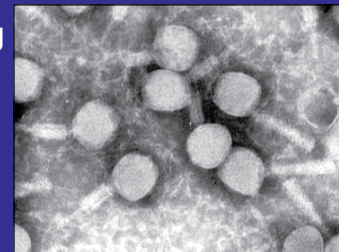
- **Routine Service**
- **Immunodiscovery**
 - *Titration of Primary & Secondary Antibodies.*
 - *Optimization of Immunostain*
 - *Optimization of Detection and Counterstain*
- **Floating**



Electron Microscopy

Superior technical expertise and familiarity with the scientific objectives of our clients are the cornerstone of our success in Electron Microscopy Services.

- **Complete TEM Service**
 - *Processing, embedding, thin and thick sectioning & duplicate micrographs 8x10*
- **Negative Staining**
 - *Routine & Quantitative*
- **Immunogold Labeling**



Accelerating Biopharmaceutical Development

Baltimore, MD • P 800-545-6569 • F 410-605-2028 • www.paragonbioservices.com



COMMITMENT

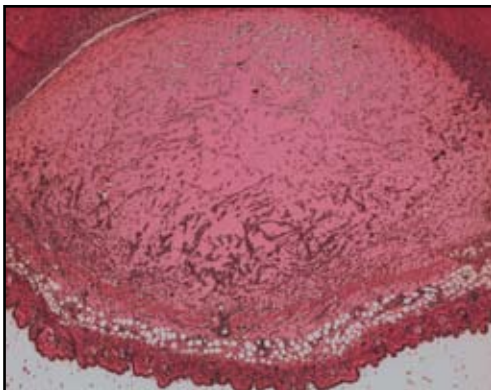
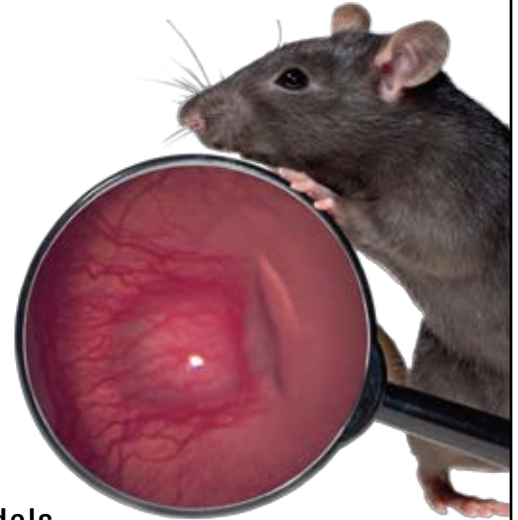
Guided by our mission to provide exceptional quality, scientific excellence and superior customer service, Paragon is committed to:

- Forging long-lasting partnerships and working relationships
- Honoring delivery schedules
- Enhancing our client's return on investment (ROI)

Functional Assays

Animal & Cell-based Models

- **Angiogenesis Models**
 - In Vitro Proliferation Assays
 - *Endothelial & Smooth Muscle Cell*
 - *96-well format*
 - In Vitro Migration Assays
 - *Endothelial & Smooth Muscle Cell*
 - *24-well transwell format*
 - In Vitro Tube Formation Assays
 - *HUVEC & HMVEC*
 - *48-well format*
 - Ex Vivo Vascular Sprouting Assay
 - *Rat aortic rings embedded in fibrin*
 - *24-well format*
 - In Vivo Matrigel Plug Assay
 - *C57 and Nude Mice*
 - *Assays for induction and inhibition of Angiogenesis*
 - *Inhibition assays induced with bFGF or bFGF/VEGF combination*
- **Ocular Angiogenesis Models**
 - *Corneal Micropocket Assay in Rats*
- **Cancer Models**
 - *In Vitro Tumor Cell Proliferation/ Cytotoxicity Assays*
 - *In Vitro Apoptosis Assays*
 - *In Vitro Tumor Invasion Assays*
 - *In Vivo Syngenic Tumor Models*
 - *In Vivo Xenograft Tumor Models*
- **CNS/PNS Injury Models**
 - *Parkinson's Model (6-hydroxy dopamine)*
 - *Sciatic Nerve Crush Model*



Accelerating Biopharmaceutical Development